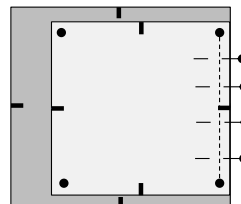
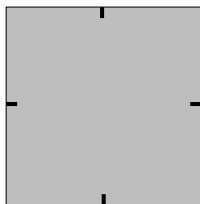




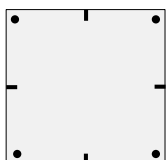
Self-Binding Flannel Blanket

Fabric	Yardage	# of Pieces	Size
Fabric A	7/8 yd. or 30 inches	1	30" x 30"
Fabric B	1 1/4 yd. or 40 inches	1	40" x 40"

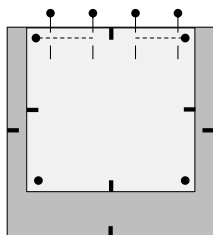
1. Fabric B - 40" square – on the right side, mark the center of each side of the square.
4. Do the same thing for the other 3 sides except sew from 1/4" dot to 1/4" dot without leaving an opening; allow the extra fabric from Fabric B to bunch up in the corners.



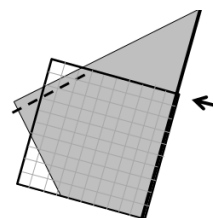
2. Fabric A - 30" square – on the wrong side, mark the center of each side and a dot 1/4" from each corner.



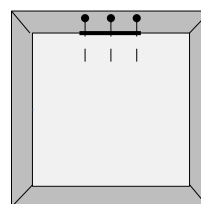
3. With Fabric A and B facing each other, match the side center markings. Sew from the 1/4" dot to 2 inches from the center and backstitch, leave a 4" opening and continue sewing including backstitch to the other 1/4" dot.



5. Fold Fabric B right sides together at one corner, matching adjacent seam lines to form a point. Using a ruler as shown, draw a line perpendicular to the Fabric B fold and through the end of the stitching line. Sew on the line from the end of the stitching to the fold, making sure not to catch Fabric A. Backstitch at each end. Repeat for the other 3 corners.



6. When all 4 corners are completed, use the 4" opening to turn the blanket right side out. If all 4 corners look correct as shown, reverse again and trim the new corner seams. Turn right side out, press and pin the opening seam in place.



7. Using a decorative stitch, sew on top of the seam between Fabric A and B closing the 4" opening.

