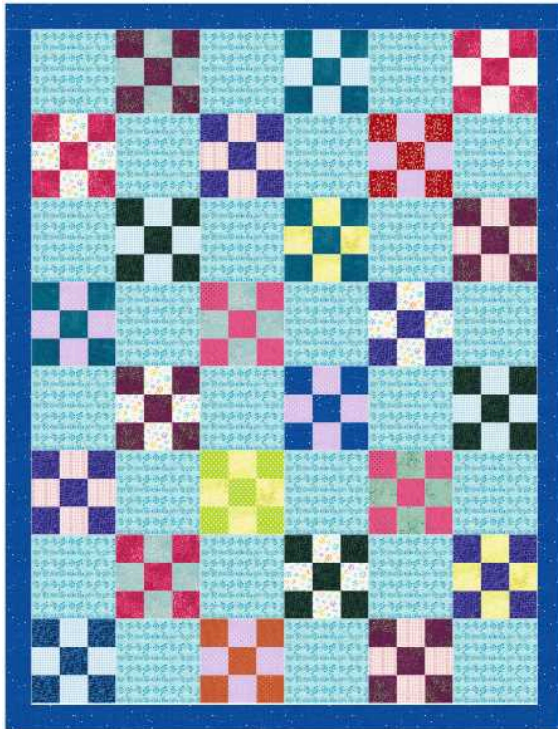
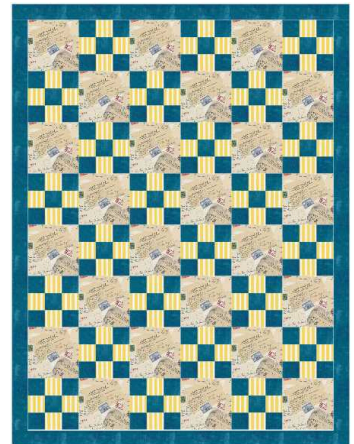


# Covered In Rest



The nine-patch block has been a quilting staple for a long time. The block can be fully scrappy or two contrasting fabrics.

**Finished Size: 40" x 52"**



## **Fabric/Cutting:**

Background -  $\frac{3}{4}$  yard

Cut 4 - 6  $\frac{1}{2}$ " strips. Sub cut into 24 6  $\frac{1}{2}$ " squares

Scraps - Enough for 24 nine patch blocks (120 - Dark 2  $\frac{1}{2}$ " squares and 96 - Light 2  $\frac{1}{2}$ " squares)

-OR-

Fabric A (dark/medium) -  $\frac{5}{8}$  yard

Fabric B - (light) -  $\frac{1}{2}$  yard

Border -  $\frac{1}{2}$  yard

Cut 5 - 2  $\frac{1}{2}$ " strips

## **Sew:**

Make 24 nine patch blocks. If you are not using scraps for these, create 3 strip sets of dark/light/dark cut into 48 - 2  $\frac{1}{2}$ " sections and 2 strip sets of light/dark/light cut into 24 - 2  $\frac{1}{2}$ " sections.

Layout as shown. Sew together.

Add the border.